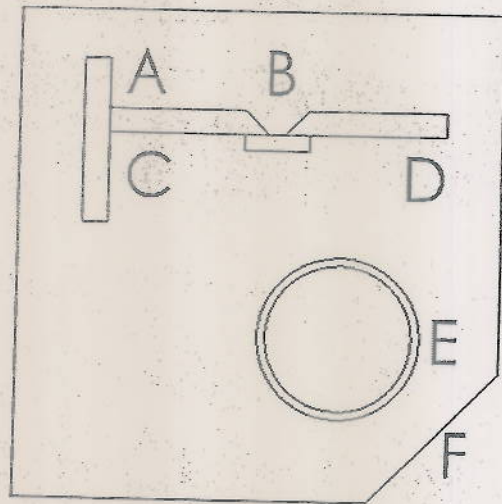


# SMAW

CONTEST NUMBER 1003

GUSSET		
A	VERTICAL UP	6 /10
B	ROOT	5 /10
B	FILL	6 /10
B	COVER	6 /10
C	DOWN	7 /10
D	UPPER FILLET	6 /10
D	LOWER FILLET	6 /10
E	PIPE	7 /10
F	PAC	8 /10
	LAYOUT	9 /10
		66 /100 PTS

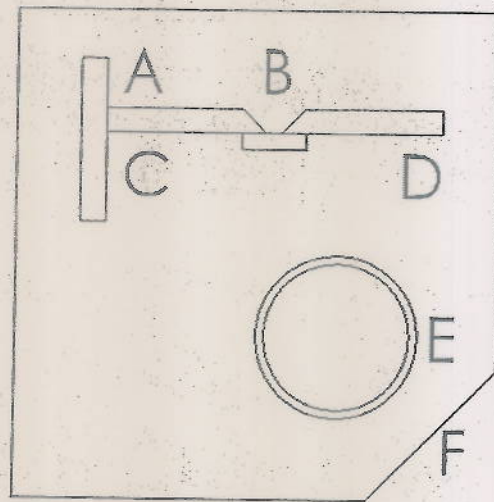


✓

# SMAW

CONTEST NUMBER 1004

GUSSET		
A	VERTICAL UP	5 /10
B	ROOT	6 /10
B	FILL	5 /10
B	COVER	6 /10
C	DOWN	6 /10
D	UPPER FILLET	6 /10
D	LOWER FILLET	6.5 /10
E	PIPE	6.5 /10
F	PAC	5 /10
	LAYOUT	6 /10
52		/100 PTS

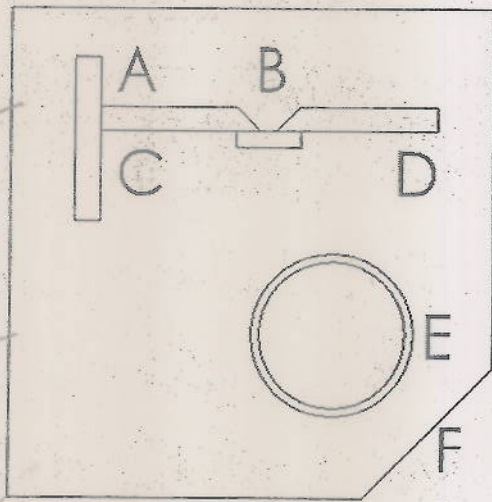


A

# SMAW

CONTEST NUMBER 1023

GUSSET		
A	VERTICAL UP	8 /10
B	ROOT	8 /10
B	FILL	8.5 /10
B	COVER	8 <del>8</del> /10
C	DOWN	9 /10
D	UPPER FILLET	9 <del>8</del> /10
D	LOWER FILLET	6.5 <del>9</del> /10
E	PIPE	9.5 /10
F	PAC	6 /10
	LAYOUT	10 /10
		<del>82.5</del> /100 PTS



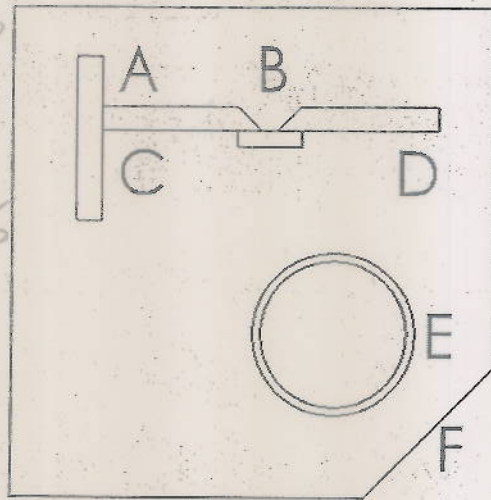
M&D

A

# SMAW

CONTEST NUMBER 1024

GUSSET		
A	VERTICAL UP	9 /10
B	ROOT	6.5 /10
B	FILL	7 <del>8</del> /10
B	COVER	9 /10
C	DOWN	7.5 /10
D	UPPER FILLET	9 <del>8</del> /10
D	LOWER FILLET	7 <del>8</del> /10
E	PIPE	8 /10
F	PAC	7.5 /10
	LAYOUT	10 /10
80.5 /100 PTS		



715.5

716

705

715

717.5

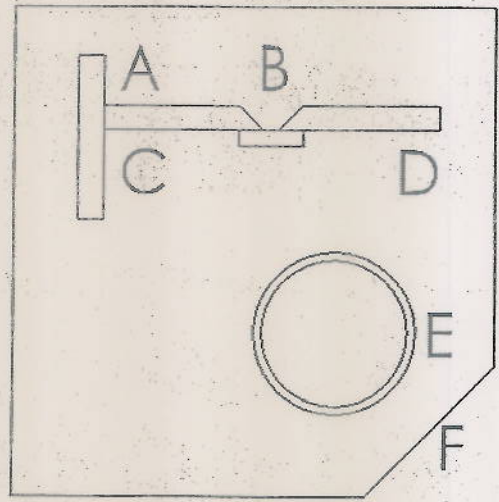
A ✓



# SMAW

CONTEST NUMBER 1031

GUSSET		
A	VERTICAL UP	6 /10
B	ROOT	5 /10
B	FILL	0 /10
B	COVER	0 /10
C	DOWN	5 /10
D	UPPER FILLET	6.5 /10
D	LOWER FILLET	6 /10
E	PIPE	7.5 /10
F	PAC	7 /10
	LAYOUT	9 /10
52		/100 PTS

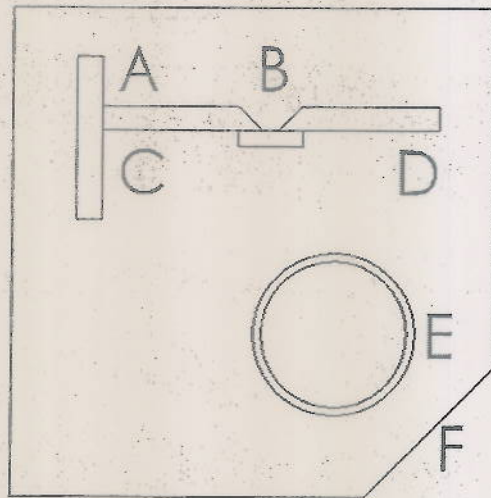


R ✓

# SMAW

CONTEST NUMBER 1032

GUSSET		
A	VERTICAL UP	6 /10
B	ROOT	6 /10
B	FILL	6 /10
B	COVER	9 /10
C	DOWN	7 /10
D	UPPER FILLET	6 /10
D	LOWER FILLET	5.5 /10
E	PIPE	7 /10
F	PAC	5 /10
	LAYOUT	78 /10
		64.5 /100 PTS

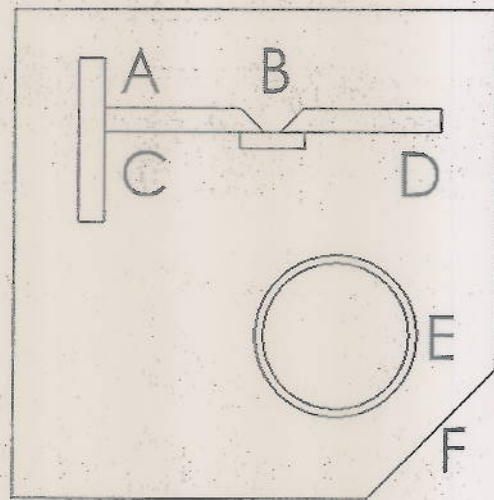


P

# SMAW

CONTEST NUMBER 1040

GUSSET		
A	VERTICAL UP	6 /10
B	ROOT	5 /10
B	FILL	0 /10
B	COVER	0 /10
C	DOWN	0 /10
D	UPPER FILLET	5 /10
D	LOWER FILLET	0 /10
E	PIPE	5 /10
F	PAC	0 /10
	LAYOUT	7 /10
		28 /100 PTS

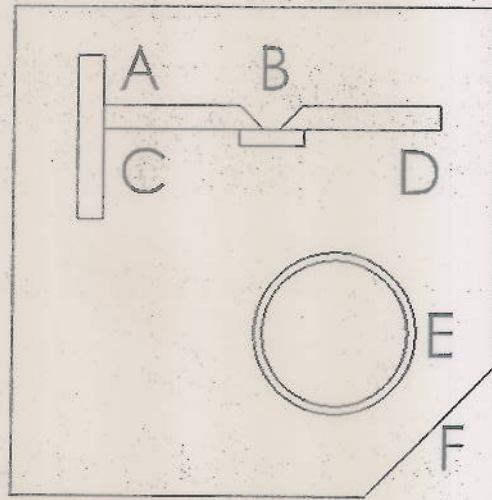


A

# SMAW

CONTEST NUMBER 1042

GUSSET		
A	VERTICAL UP	6 <del>7</del> /10
B	ROOT	7 /10
B	FILL	7 /10
B	COVER	7.5 /10
C	DOWN	8 /10
D	UPPER FILLET	6.5 /10
D	LOWER FILLET	7 /10
E	PIPE	7 /10
F	PAC	7 /10
	LAYOUT	7 /10
		70 /100 PTS



A



# SMAW

CONTEST NUMBER 1048

GUSSET		
A	VERTICAL UP	8 /10
B	ROOT	6.5 /10
B	FILL	8 /10
B	COVER	9 /10
C	DOWN	8 /10
D	UPPER FILLET	8 /10
D	LOWER FILLET	8 /10
E	PIPE	10 /10
F	PAC	8 /10
	LAYOUT	10 /10
		<del>83.5</del> /100 PTS 83.5

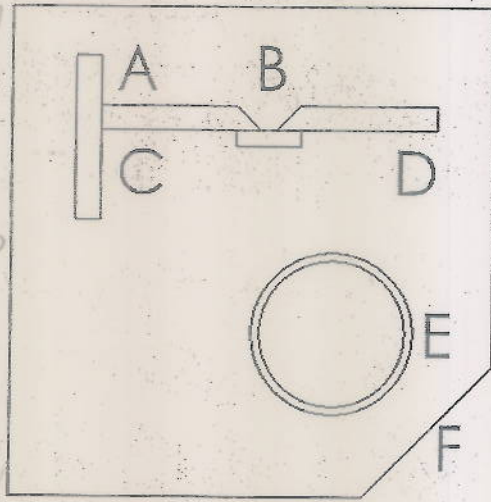
714.5

717

716

718

718



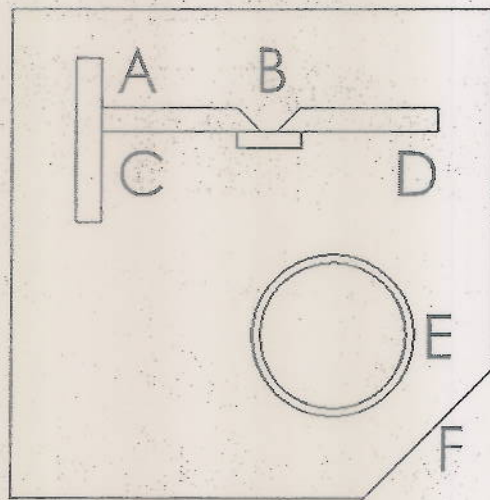
AKID

A ✓

# SMAW

CONTEST NUMBER 1065

GUSSET		
A	VERTICAL UP	6 /10
B	ROOT	5 /10
B	FILL	6 /10
B	COVER	5 /10
C	DOWN	7 /10
D	UPPER FILLET	7.5 /10
D	LOWER FILLET	6 /10
E	PIPE	6.5 /10
F	PAC	8 /10
	LAYOUT	8 /10
59		/100 PTS

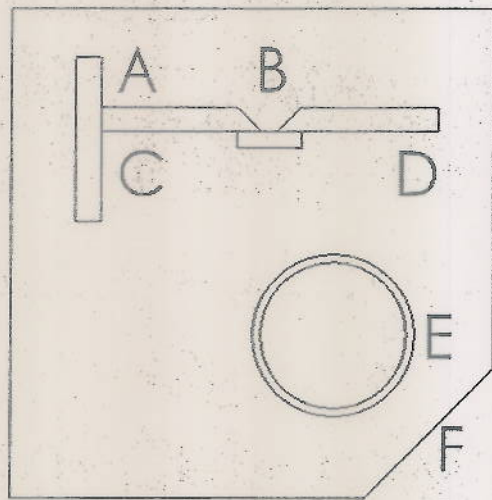


P

# SMAW

CONTEST NUMBER 1066

GUSSET		
A	VERTICAL UP	8/10
B	ROOT	6/10
B	FILL	6/10
B	COVER	7/10
C	DOWN	8/10
D	UPPER FILLET	7/10
D	LOWER FILLET	7/10
E	PIPE	7/10
F	PAC	7/10
	LAYOUT	10/10
73 <del>10</del> /100 PTS		

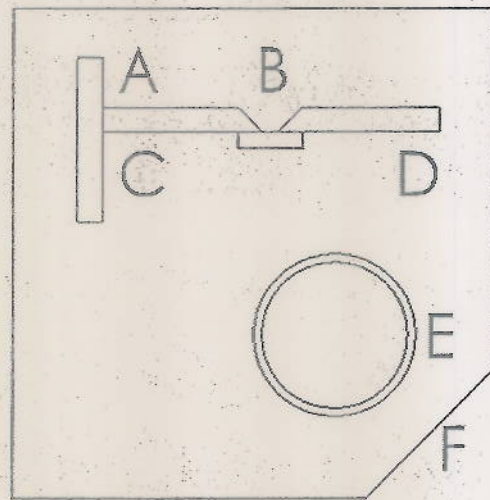


P ✓

# SMAW

CONTEST NUMBER 1087

GUSSET		
A	VERTICAL UP	9 /10
B	ROOT	6 /10
B	FILL	7 /10
B	COVER	8 /10
C	DOWN	7 /10
D	UPPER FILLET	7 /10
D	LOWER FILLET	7 /10
E	PIPE	8 /10
F	PAC	6 /10
	LAYOUT	9 /10
		74 /100 PTS



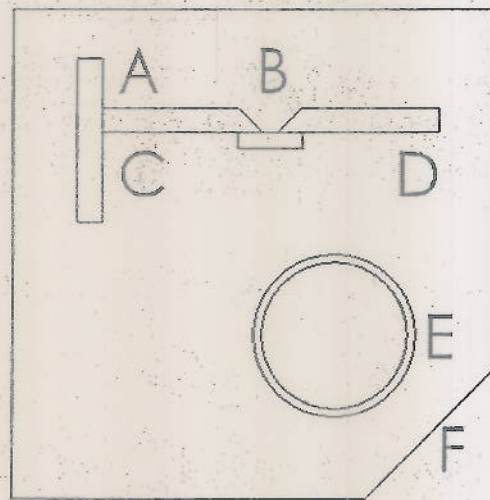
P/



# SMAW

CONTEST NUMBER 1089

GUSSET		
A	VERTICAL UP	6 /10
B	ROOT	5 /10
B	FILL	6 /10
B	COVER	6 /10
C	DOWN	5 /10
D	UPPER FILLET	6 /10
D	LOWER FILLET	5 /10
E	PIPE	8 /10
F	PAC	0 /10
	LAYOUT	5 /10
		52 /100 PTS



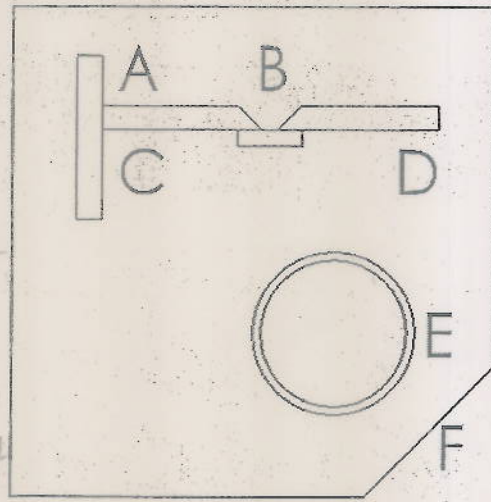
# SMAW

CONTEST NUMBER 1095

GUSSET		
A	VERTICAL UP	8.5 /10
B	ROOT	9 /10
B	FILL	6 /10
B	COVER	8.5 /10
C	DOWN	5 /10
D	UPPER FILLET	7 /10
D	LOWER FILLET	6 /10
E	PIPE	8 /10
F	PAC	7.8 /10
	LAYOUT	10 /10
		75 /100 PTS

17.5  
very good

14.5 -> very good just a little inconsistent



12

14

17

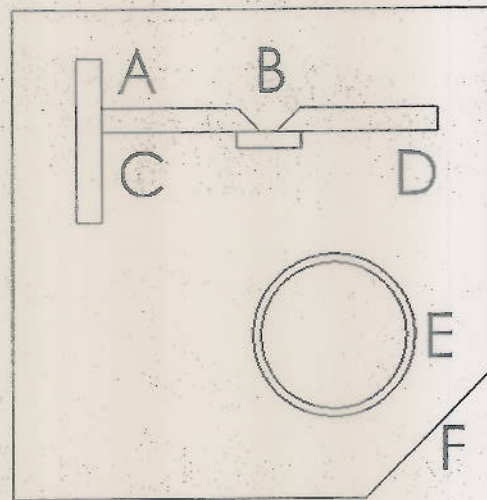
75

A ✓

# SMAW

CONTEST NUMBER 1097

GUSSET		
A	VERTICAL UP	7 /10
B	ROOT	5 /10
B	FILL	5 /10
B	COVER	6 /10
C	DOWN	6.5 /10
D	UPPER FILLET	6.5 /10
D	LOWER FILLET	6.5 /10
E	PIPE	7.5 /10
F	PAC	7.5 /10
	LAYOUT	7 /10
64.5 /100 PTS		

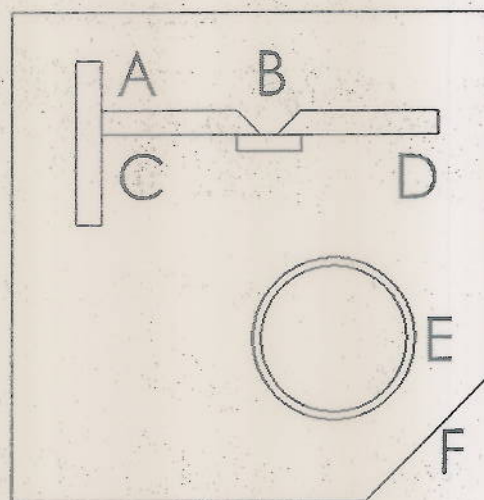


A

# SMAW

CONTEST NUMBER 1098

GUSSET		
A	VERTICAL UP	5.5 /10
B	ROOT	5 /10
B	FILL	6 /10
B	COVER	0 /10
C	DOWN	5.5 /10
D	UPPER FILLET	7 /10
D	LOWER FILLET	6 /10
E	PIPE	6 /10
F	PAC	0 /10
	LAYOUT	7 /10
		42 /100 PTS



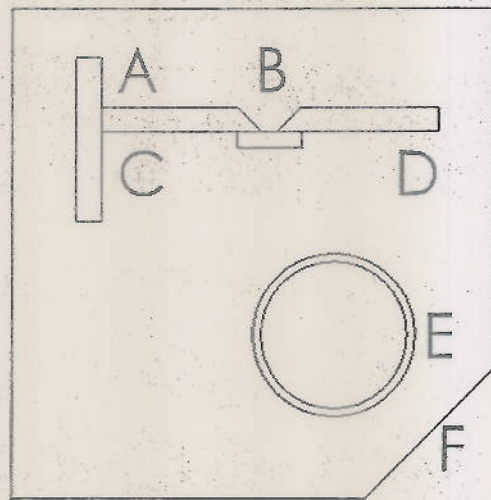
P



# SMAW

CONTEST NUMBER 1099

GUSSET		
A	VERTICAL UP	7 /10
B	ROOT	5 /10
B	FILL	5 /10
B	COVER	6 /10
C	DOWN	8 /10
D	UPPER FILLET	6 /10
D	LOWER FILLET	7 /10
E	PIPE	8 /10
F	PAC	6 /10
	LAYOUT	9 /10
		67 /100 PTS

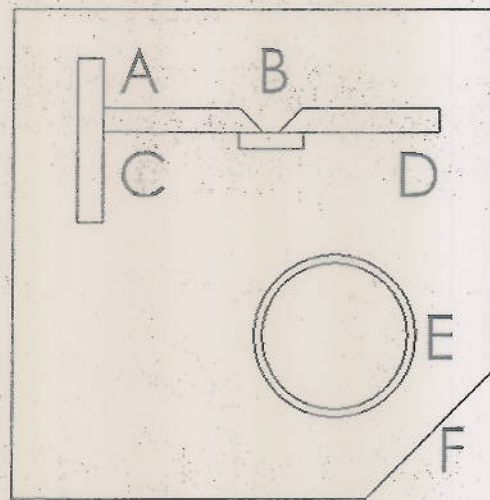


A

# SMAW

CONTEST NUMBER 1123

GUSSET		
A	VERTICAL UP	0 / 10
B	ROOT	5 / 10
B	FILL	5 / 10
B	COVER	5 / 10
C	DOWN	0 / 10
D	UPPER FILLET	5 / 10
D	LOWER FILLET	5 / 10
E	PIPE	6 / 10
F	PAC	6 / 10
	LAYOUT	7 / 10
44 / 100 PTS		

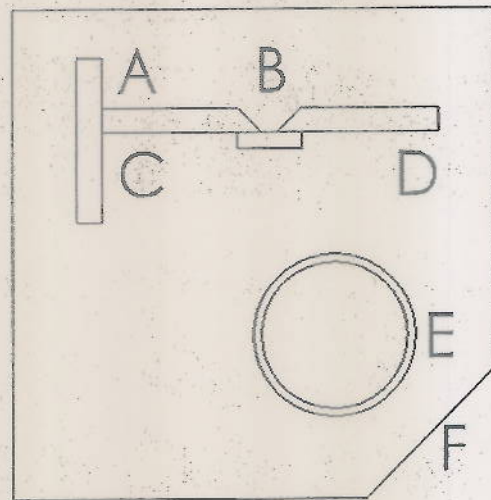


A

# SMAW

CONTEST NUMBER 1145

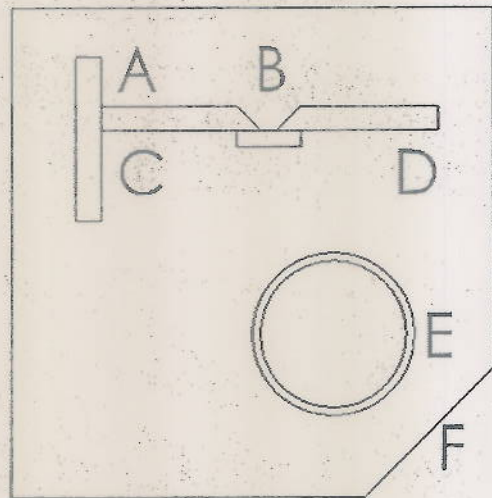
GUSSET		
A	VERTICAL UP	7 /10
B	ROOT	5 /10
B	FILL	5 /10
B	COVER	6 /10
C	DOWN	6 /10
D	UPPER FILLET	5 /10
D	LOWER FILLET	0 /10
E	PIPE	7 /10
F	PAC	6 /10
	LAYOUT	6 /10
53 /100 PTS		



# SMAW

CONTEST NUMBER 1162

GUSSET		
A	VERTICAL UP	5.5 /10
B	ROOT	5 /10
B	FILL	5 /10
B	COVER	0 /10
C	DOWN	0 /10
D	UPPER FILLET	5.5 /10
D	LOWER FILLET	6 /10
E	PIPE	7 /10
F	PAC	0 /10
	LAYOUT	7 /10
41 /100 PTS		



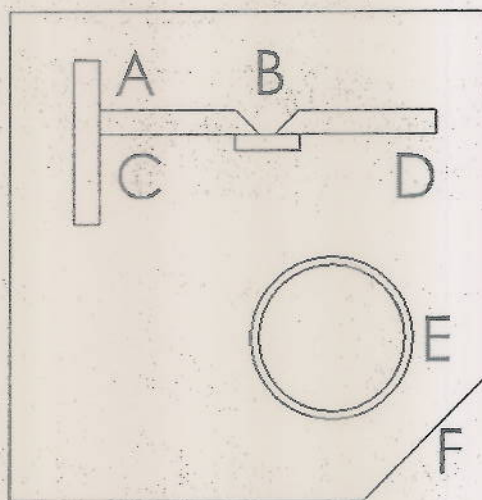
A



# SMAW

CONTEST NUMBER 1164

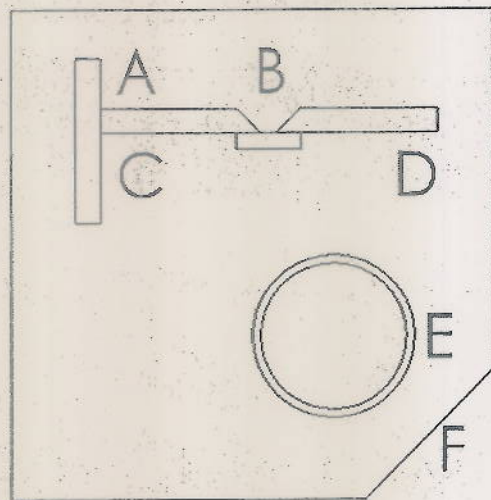
GUSSET		
A	VERTICAL UP	5.5 /10
B	ROOT	5 /10
B	FILL	5 /10
B	COVER	6 /10
C	DOWN	7.5 /10
D	UPPER FILLET	6.5 /10
D	LOWER FILLET	5.5 /10
E	PIPE	6.5 /10
F	PAC	5 /10
	LAYOUT	8 /10
60.5 /100 PTS		



# SMAW

CONTEST NUMBER 1168

GUSSET		
A	VERTICAL UP	6 /10
B	ROOT	5 /10
B	FILL	7 /10
B	COVER	6 /10
C	DOWN	5 /10
D	UPPER FILLET	5 /10
D	LOWER FILLET	6 /10
E	PIPE	6 /10
F	PAC	6 /10
	LAYOUT	50 /10
57 /100 PTS		

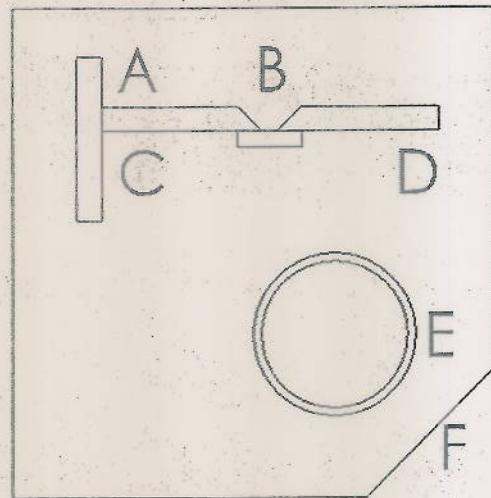


A

# SMAW

CONTEST NUMBER 1173

GUSSET		
A	VERTICAL UP	5 /10
B	ROOT	5 /10
B	FILL	5 /10
B	COVER	7 /10
C	DOWN	5 /10
D	UPPER FILLET	8 /10
D	LOWER FILLET	6.5 /10
E	PIPE	8.5 /10
F	PAC	6 /10
	LAYOUT	8 /10
64 /100 PTS		

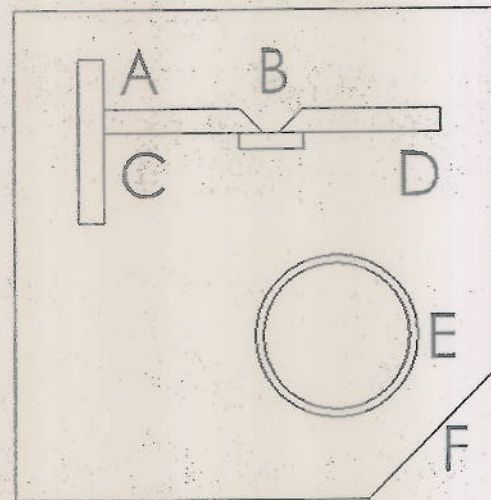


A

# SMAW

CONTEST NUMBER 1174

GUSSET		
A	VERTICAL UP	5 /10
B	ROOT	5 /10
B	FILL	0 /10
B	COVER	0 /10
C	DOWN	5 /10
D	UPPER FILLET	5 /10
D	LOWER FILLET	5 /10
E	PIPE	6.5 /10
F	PAC	7.5 /10
	LAYOUT	7 /10
		46 /100 PTS



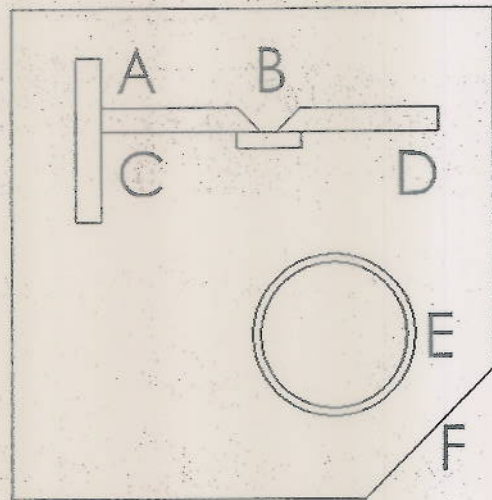
P✓



# SMAW

CONTEST NUMBER 1175

GUSSET		
A	VERTICAL UP	65 /10
B	ROOT	7 /10
B	FILL	8 /10
B	COVER	7 /10
C	DOWN	8 /10
D	UPPER FILLET	7 /10
D	LOWER FILLET	65 /10
E	PIPE	65 /10
F	PAC	7 /10
	LAYOUT	7 /10
		70.5 /100 PTS

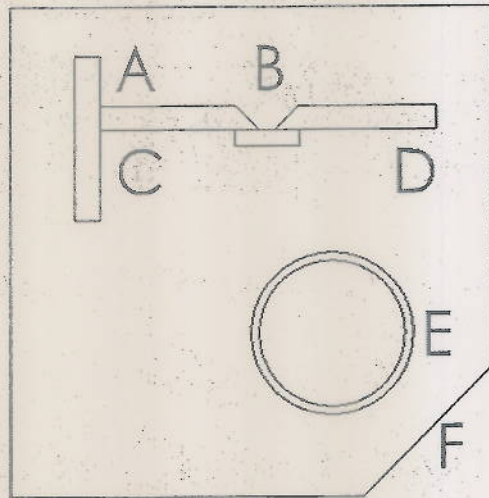


A

# SMAW

CONTEST NUMBER 1180

GUSSET		
A	VERTICAL UP	7.5/10
B	ROOT	5 /10
B	FILL	7 /10
B	COVER	8 /10
C	DOWN	7 /10
D	UPPER FILLET	6.5 /10
D	LOWER FILLET	6 /10
E	PIPE	6.5/10
F	PAC	7 /10
	LAYOUT	5 /10
		65.5 /100 PTS

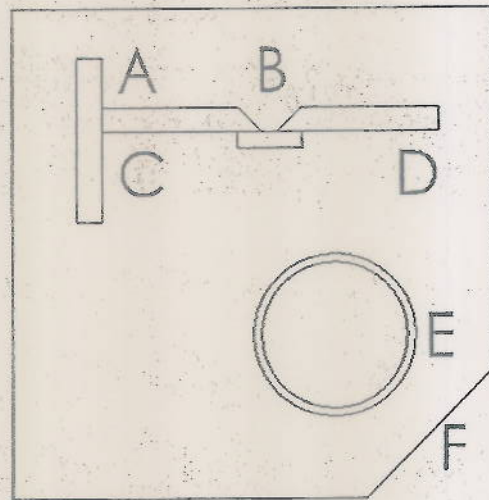


A

# SMAW

CONTEST NUMBER 1187

GUSSET		
A	VERTICAL UP	7.5 /10
B	ROOT	5 /10
B	FILL	0 /10
B	COVER	0 /10
C	DOWN	6 /10
D	UPPER FILLET	6 /10
D	LOWER FILLET	6 /10
E	PIPE	6.5 /10
F	PAC	7 /10
	LAYOUT	10 /10
54		/100 PTS

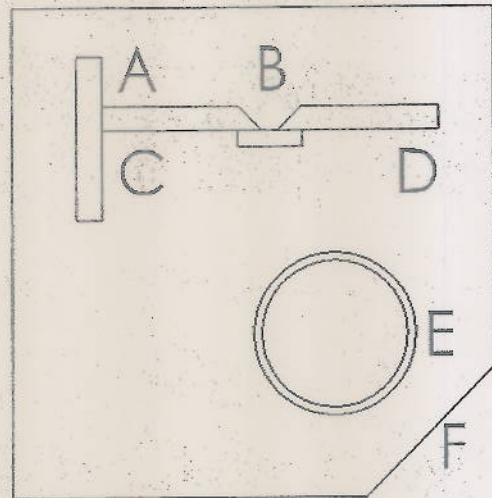


A

# SMAW

CONTEST NUMBER 1197

GUSSET		
A	VERTICAL UP	0 /10
B	ROOT	7 /10
B	FILL	5 /10
B	COVER	0 /10
C	DOWN	5 /10
D	UPPER FILLET	5 /10
D	LOWER FILLET	6 /10
E	PIPE	6.5 /10
F	PAC	6 /10
	LAYOUT	10 /10
		50.5 /100 PTS





# SMAW

CONTEST NUMBER 1343

GUSSET		
A	VERTICAL UP	8 /10
B	ROOT	7 /10
B	FILL	7 /10
B	COVER	9 /10
C	DOWN	8 /10
D	UPPER FILLET	8.5 /10
D	LOWER FILLET	7 /10
E	PIPE	8 /10
F	PAC	8 /10
	LAYOUT	10 /10
805 /100 PTS		

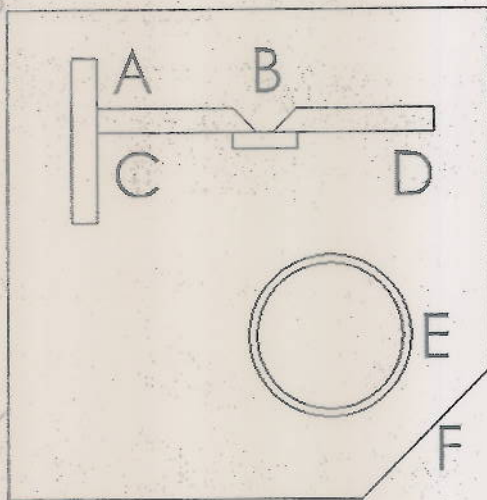
715

716

165

715

718

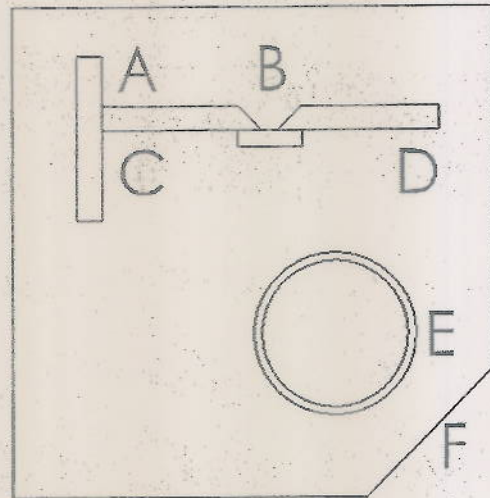


A

# SMAW

CONTEST NUMBER 1352

GUSSET		
A	VERTICAL UP	6 /10
B	ROOT	5 /10
B	FILL	0 /10
B	COVER	0 /10
C	DOWN	7 /10
D	UPPER FILLET	6 /10
D	LOWER FILLET	6 /10
E	PIPE	7.5 /10
F	PAC	8 /10
	LAYOUT	9 /10
<del>40.5</del> 54.5		/100 PTS



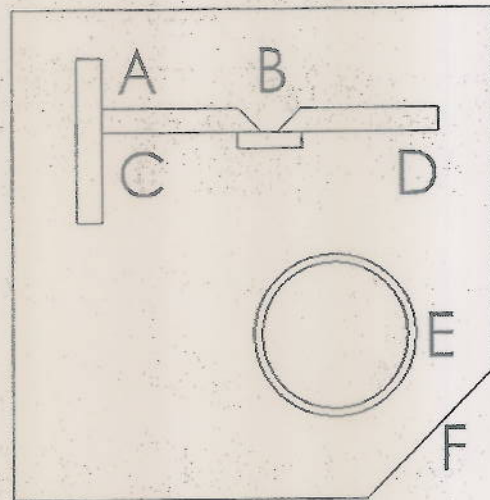
P ✓

# SMAW

CONTEST NUMBER ~~1357~~ 1357

GUSSET		
A	VERTICAL UP	5/10
B	ROOT	5/10
B	FILL	0/10
B	COVER	0/10
C	DOWN	6/10
D	UPPER FILLET	5/10
D	LOWER FILLET	6/10
E	PIPE	6/10
F	PAC	8/10
	LAYOUT	7/10
		48 /100 PTS

→ looks good but is a vertical down not up

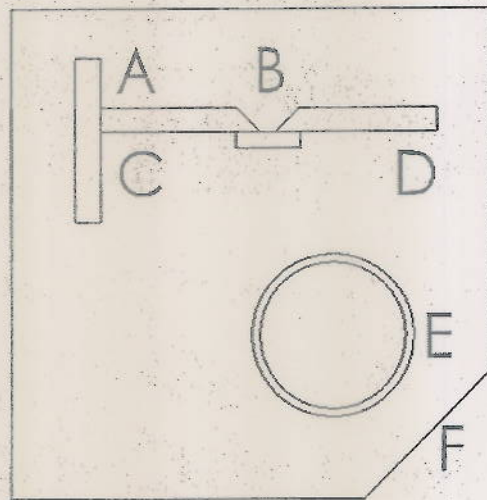


P✓

SMAW

CONTEST NUMBER 1358

GUSSET		
A	VERTICAL UP	0 /10
B	ROOT	6 /10
B	FILL	6 /10
B	COVER	7 /10
C	DOWN	6 /10
D	UPPER FILLET	6 /10
D	LOWER FILLET	7 /10
E	PIPE	6 /10
F	PAC	7 /10
	LAYOUT	9 /10
		54 /100 PTS



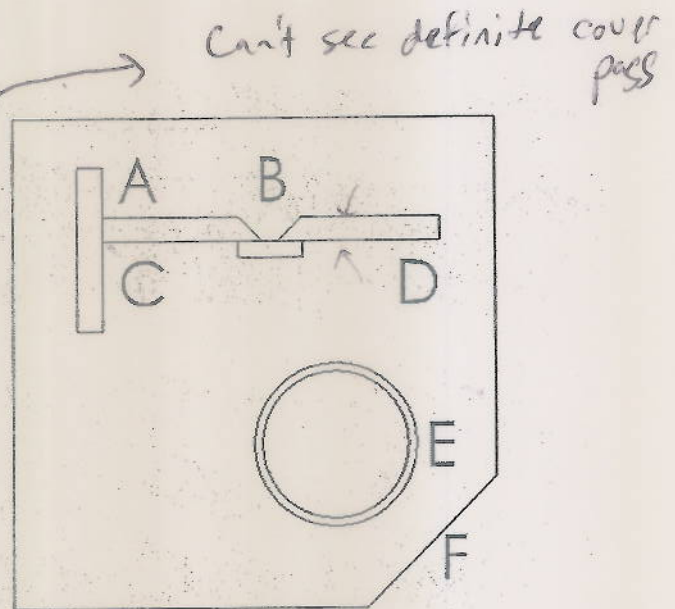
PJ



# SMAW

CONTEST NUMBER 1409

GUSSET		
A	VERTICAL UP	6 /10
B	ROOT	6 /10
B	FILL	5 /10
B	COVER	00 /10
C	DOWN	7 /10
D	UPPER FILLET	5 /10
D	LOWER FILLET	5 /10
E	PIPE	7 /10
F	PAC	7 /10
	LAYOUT	7 /10
		55 /100 PTS

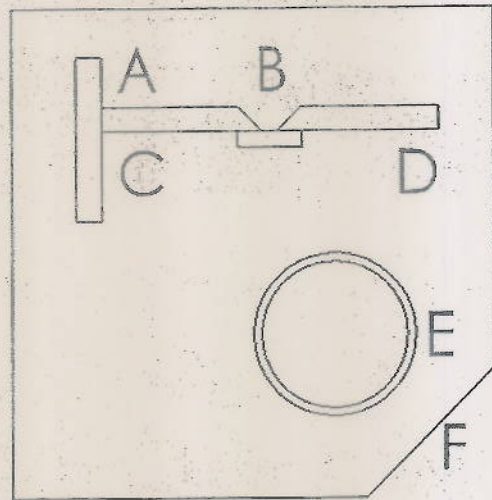


A

# SMAW

CONTEST NUMBER 1426

GUSSET		
A	VERTICAL UP	7 /10
B	ROOT	5 /10
B	FILL	5 /10
B	COVER	5 /10
C	DOWN	5 /10
D	UPPER FILLET	6 /10
D	LOWER FILLET	6 /10
E	PIPE	7 /10
F	PAC	0 /10
	LAYOUT	7 /10
		53 /100 PTS

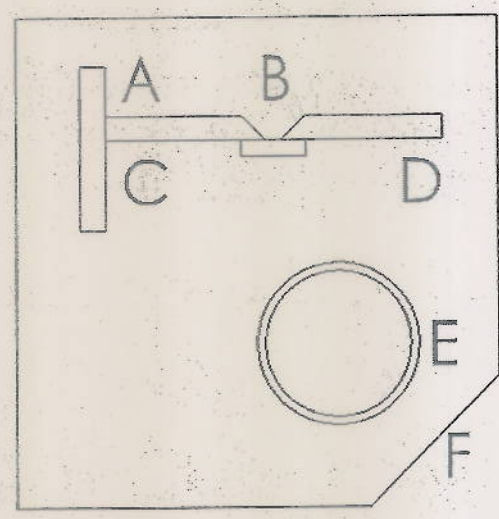


A

# SMAW

CONTEST NUMBER 1442

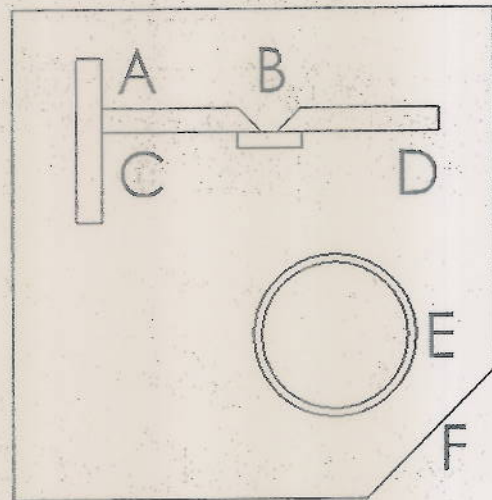
GUSSET		
A	VERTICAL UP	7 /10
B	ROOT	6 /10
B	FILL	6 /10
B	COVER	5 /10
C	DOWN	6.5 /10
D	UPPER FILLET	7 /10
D	LOWER FILLET	6 /10
E	PIPE	8 /10
F	PAC	6 /10
	LAYOUT	7 /10
64.5 /100 PTS		64.5



# SMAW

CONTEST NUMBER 1465

GUSSET		
A	VERTICAL UP	0/10
B	ROOT	5/10
B	FILL	0/10
B	COVER	0/10
C	DOWN	0/10
D	UPPER FILLET	5/10
D	LOWER FILLET	5/10
E	PIPE	5/10
F	PAC	7/10
	LAYOUT	6/10
		33 /100 PTS

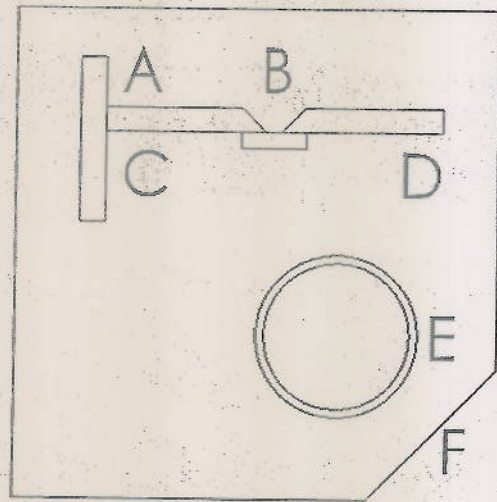




# SMAW

CONTEST NUMBER 1499

GUSSET		
A	VERTICAL UP	5 /10
B	ROOT	5 /10
B	FILL	0 /10
B	COVER	0 /10
C	DOWN	5 /10
D	UPPER FILLET	0 /10
D	LOWER FILLET	5 /10
E	PIPE	6.5 /10
F	PAC	0 /10
	LAYOUT	0 /10
26.5		/100 PTS

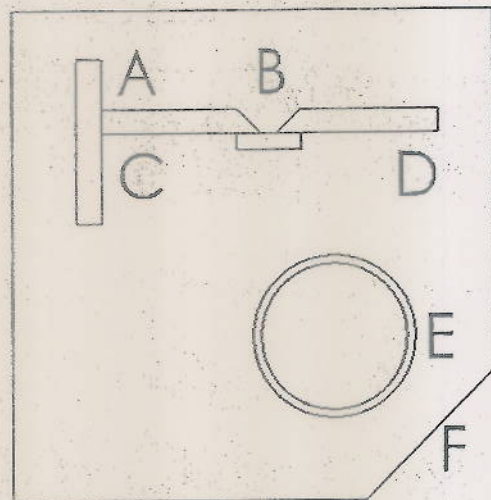


P ✓

# SMAW

CONTEST NUMBER 1503

GUSSET		
A	VERTICAL UP	7 /10
B	ROOT	0 /10
B	FILL	0 /10
B	COVER	0 /10
C	DOWN	0 /10
D	UPPER FILLET	0 /10
D	LOWER FILLET	0 /10
E	PIPE	8 /10
F	PAC	0 /10
	LAYOUT	10 /10
25		/100 PTS



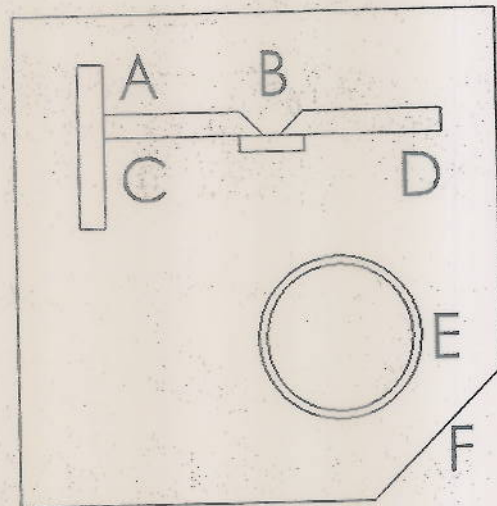
2/

SMAW

CONTEST NUMBER

9  
1504

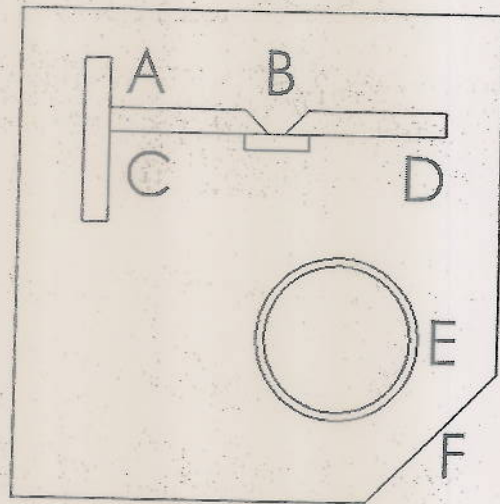
GUSSET		
A	VERTICAL UP	0 /10
B	ROOT	0 /10
B	FILL	0 /10
B	COVER	0 /10
C	DOWN	0 /10
D	UPPER FILLET	0 /10
D	LOWER FILLET	0 /10
E	PIPE	8 /10
F	PAC	6 /10
	LAYOUT	0 /10
		14 /100 PTS



# SMAW

CONTEST NUMBER 1528

GUSSET		
A	VERTICAL UP	5 /10
B	ROOT	5 /10
B	FILL	5 /10
B	COVER	0 /10
C	DOWN	5 /10
D	UPPER FILLET	0 /10
D	LOWER FILLET	5 /10
E	PIPE	7 /10
F	PAC	5 /10
	LAYOUT	7 /10
		<u>42</u> /100 PTS



44 MKT

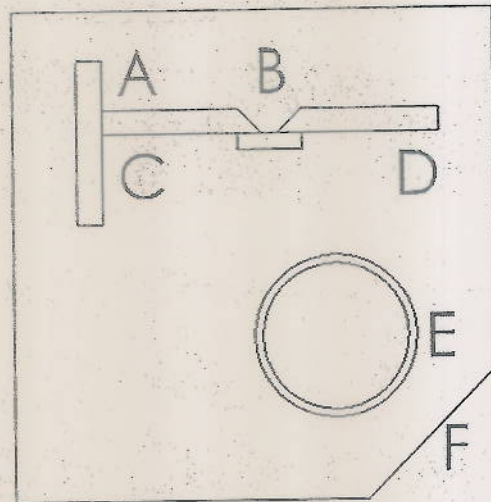
A



# SMAW

CONTEST NUMBER 1537

GUSSET		
A	VERTICAL UP	5 /10
B	ROOT	5 /10
B	FILL	0 /10
B	COVER	0 /10
C	DOWN	5 /10
D	UPPER FILLET	5 /10
D	LOWER FILLET	5 /10
E	PIPE	5 /10
F	PAC	0 /10
	LAYOUT	7 /10
		37 /100 PTS

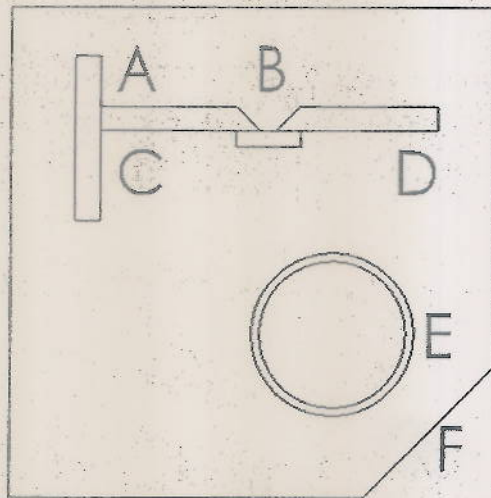


A ✓

# SMAW

CONTEST NUMBER 1545

GUSSET		
A	VERTICAL UP	<del>8</del> <del>0</del> <del>8</del> <del>0</del> /10
B	ROOT	7 /10
B	FILL	7 /10
B	COVER	6.5 /10
C	DOWN	6 /10
D	UPPER FILLET	7 /10
D	LOWER FILLET	6.5 /10
E	PIPE	8 /10
F	PAC	9 /10
	LAYOUT	7 /10
		<del>72</del> <del>0</del> /100 PTS



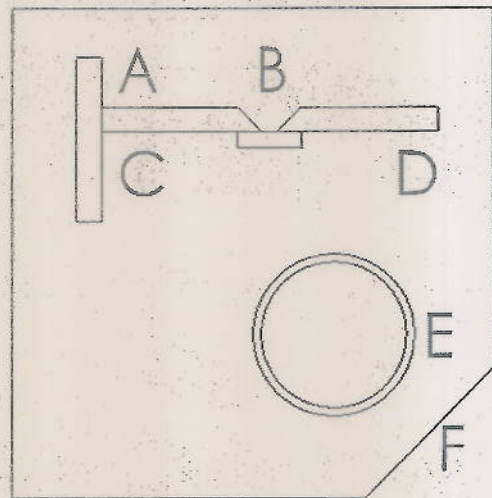
great job!

A ✓

# SMAW

CONTEST NUMBER 1553

GUSSET		
A	VERTICAL UP	5 /10
B	ROOT	5 /10
B	FILL	6 /10
B	COVER	0 /10
C	DOWN	5 /10
D	UPPER FILLET	6 /10
D	LOWER FILLET	6 /10
E	PIPE	7 /10
F	PAC	8 /10
	LAYOUT	8 /10
		50 /100 PTS

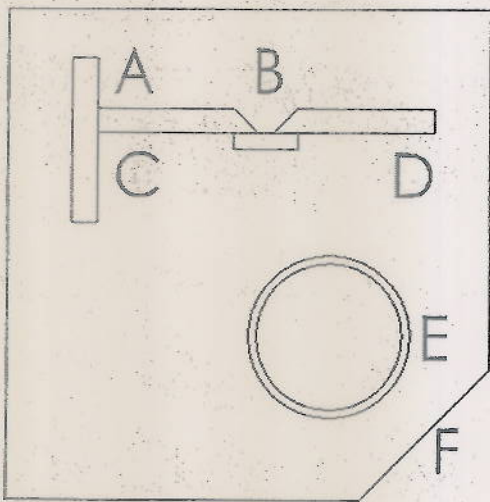


✓

# SMAW

CONTEST NUMBER 1559

GUSSET		
A	VERTICAL UP	7 /10
B	ROOT	6 /10
B	FILL	6 /10
B	COVER	7 /10
C	DOWN	7 /10
D	UPPER FILLET	50 /10
D	LOWER FILLET	6 /10
E	PIPE	7 /10
F	PAC	7 /10
	LAYOUT	9 /10
67 /100 PTS		



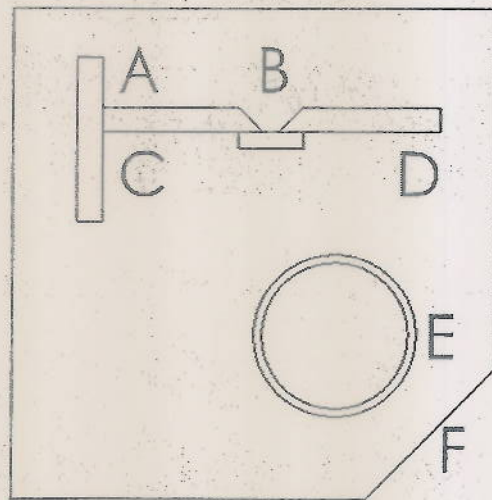
*A*



# SMAW

CONTEST NUMBER 1560

GUSSET		
A	VERTICAL UP	6 /10
B	ROOT	5 /10
B	FILL	0 /10
B	COVER	5 /10
C	DOWN	6 /10
D	UPPER FILLET	6 /10
D	LOWER FILLET	6 /10
E	PIPE	6 /10
F	PAC	0 /10
	LAYOUT	9 /10
49 /100 PTS		

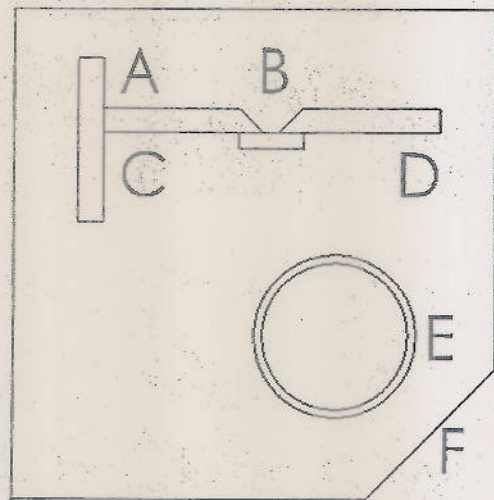


A

# SMAW

CONTEST NUMBER 1735

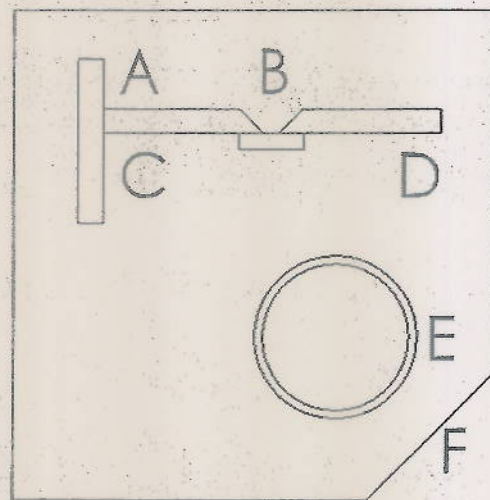
GUSSET		
A	VERTICAL UP	6.5 /10
B	ROOT	5 /10
B	FILL	6.5 /10
B	COVER	7 /10
C	DOWN	7 /10
D	UPPER FILLET	5 /10
D	LOWER FILLET	6 /10
E	PIPE	8.5 /10
F	PAC	8 /10
	LAYOUT	9 /10
68.5 /100 PTS		



# SMAW

CONTEST NUMBER 1750

GUSSET		
A	VERTICAL UP	8 /10
B	ROOT	5 /10
B	FILL	7 /10
B	COVER	8 /10
C	DOWN	5 /10
D	UPPER FILLET	6 /10
D	LOWER FILLET	6 /10
E	PIPE	7.5 /10
F	PAC	6 /10
	LAYOUT	9 /10
675		/100 PTS

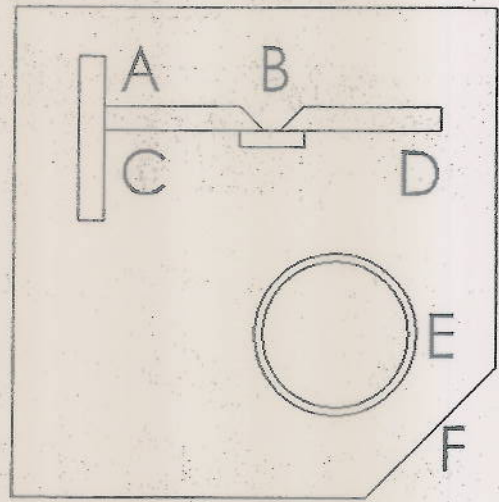


*[Handwritten signature]*

SMAW

CONTEST NUMBER 1989

GUSSET		
A	VERTICAL UP	0 /10
B	ROOT	0 /10
B	FILL	0 /10
B	COVER	0 /10
C	DOWN	0 /10
D	UPPER FILLET	0 /10
D	LOWER FILLET	0 /10
E	PIPE	0 /10
F	PAC	0 /10
	LAYOUT	0 /10
		0 /100 PTS



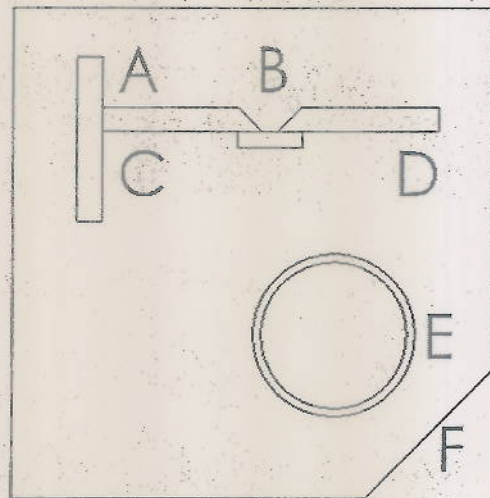
P ✓



# SMAW

CONTEST NUMBER 1990

GUSSET		
A	VERTICAL UP	5 /10
B	ROOT	5 /10
B	FILL	5 /10
B	COVER	5 /10
C	DOWN	5 /10
D	UPPER FILLET	6.5 /10
D	LOWER FILLET	6 /10
E	PIPE	8 /10
F	PAC	6 /10
	LAYOUT	8 /10
		59.5 /100 PTS

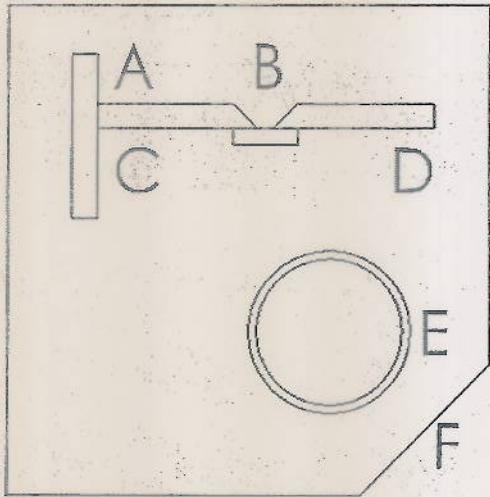


P ✓

# SMAW

CONTEST NUMBER 1991

GUSSET		
A	VERTICAL UP	5 /10
B	ROOT	7 /10
B	FILL	5 /10
B	COVER	5 /10
C	DOWN	5 /10
D	UPPER FILLET	6 /10
D	LOWER FILLET	6 /10
E	PIPE	6.5 /10
F	PAC	6 /10
	LAYOUT	9 /10
60.5 /100 PTS		

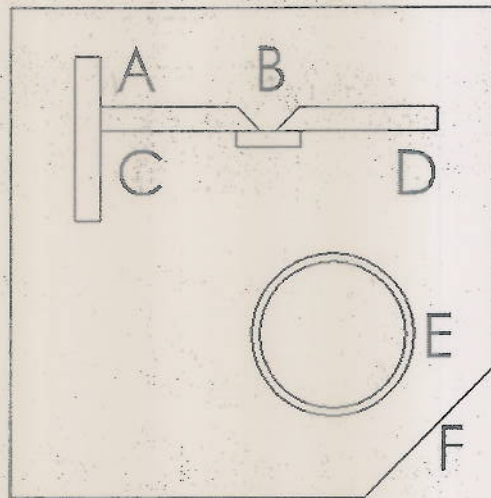


P ✓

# SMAW

CONTEST NUMBER 2065

GUSSET		
A	VERTICAL UP	8 /10
B	ROOT	6 /10
B	FILL	6.5 /10
B	COVER	7 /10
C	DOWN	7 /10
D	UPPER FILLET	7 /10
D	LOWER FILLET	6.5 /10
E	PIPE	7 /10
F	PAC	7 /10
	LAYOUT	10 /10
		72 /100 PTS



2x45° was off, but the nicest cut quality we've seen all day

A ✓